

# MERTON: THE PEOPLE AND THE PLACE

Summary of key facts and figures for the borough



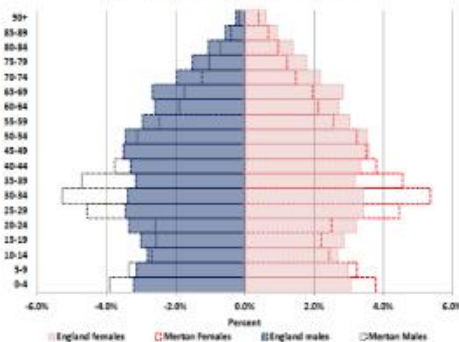
## ABOUT MERTON



Overview of London Borough of Merton  
Scale 1 : 40,000

© Crown Copyright and database right (2011) OS. London Borough of Merton 10249228. 2017. Digital Map Data © Collins Bartholomew Ltd 2017 and where appropriate. Photocopy information © Royal Mail Group PLC 2017.

Merton and England 2016 Age Structure by Gender



Compared to England, Merton has a higher proportion of children (aged 0-9) and a higher working age population (aged 25-44).

## POPULATION



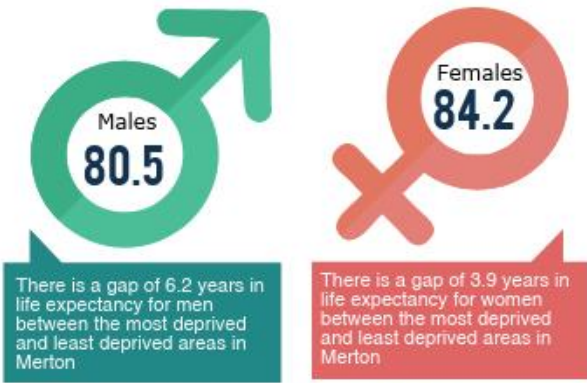
208,100  
residents in 2017



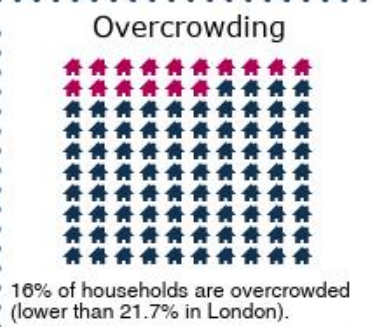
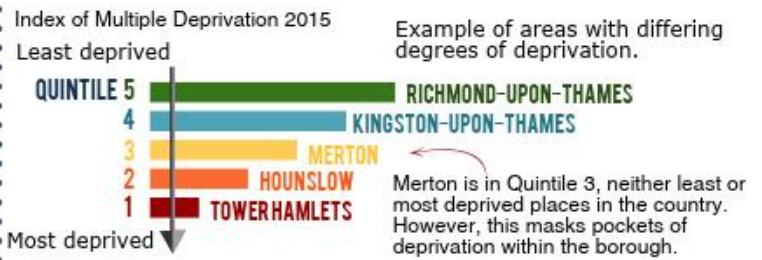
**BAME**  
background

36% of Merton's residents are of BAME background, which is lower than London (40%), but higher than England (15%).

## LIFE EXPECTANCY AT BIRTH



## DEPRIVATION



## CHILDREN & YOUNG PEOPLE

Obesity at Year 6

**21%**

obese in Year 6



This is lower than London (23%) and higher than England (19%).

GCSE Achievement



**64.8%**

achieved 5 GCSEs\*

This is higher than London (60.6%) and (\*grades A to C, including English and Maths)

Number of schools judged Good or Outstanding



**49 of 55 schools**

Percentage of children known to be eligible for and claiming free school meals

**13.4%**

at primary school



**15.2%**

at secondary school



Percentage of pupils with a first language other than English

**47.3%**

at primary school



**36.3%**

at secondary school



Median average house price

**£440,000**

This is the 17th highest in London and an increase of 7% from 2015. The average house price in London is £435,000

## HOUSING

**13.5**

Ratio of house prices to earnings

This is the 16th highest in London and above the London average of 12.8

Social housing stock



**14%**

Merton's social housing stock is amongst the Lowest in London and below the average of 22%

## OLDER PEOPLE

Living Alone



**33%**

of residents aged 65 and over live on their own. This is lower than London (35%) and higher than England (32%)

Long-term Limiting Disability



**25% LIMITED A LOT**  
**26% LIMITED A LITTLE**  
**49% NOT LIMITED**

49% of residents aged 65 and over reported that their day-to-day activities were not limited. This is higher than London (47%) and England (47%)

Employment rate



**78.8%**

above the London average of 72.8%. Unemployment in the borough is 4.6% below the London average of 6.1%

## EMPLOYMENT

Out of work benefits rate

**5.3**

This is below the London average of 7.3. Unemployed residents are concentrated towards the East of the borough, with self-employed residents concentrated towards the West

Median gross annual pay

**£33,989**



The median annual pay for residents is just above the London average of £33,776



For further data and information about Merton as a place, and its population please access the Merton Data Hub. The Hub enables you to make comparisons nationally and with other local areas: <https://data.merton.gov.uk/>